






Perímetro Urbano

Legenda

-  Perímetro Urbano
-  Sede do Município
-  Estrada Rural Secundária
-  RODOVIA MG - 295
-  Estrada Rural Principal
-  Território Municipal

Projeção Universal Transversa de Mercator (UTM)

Datum: WGS 1984



N.M.

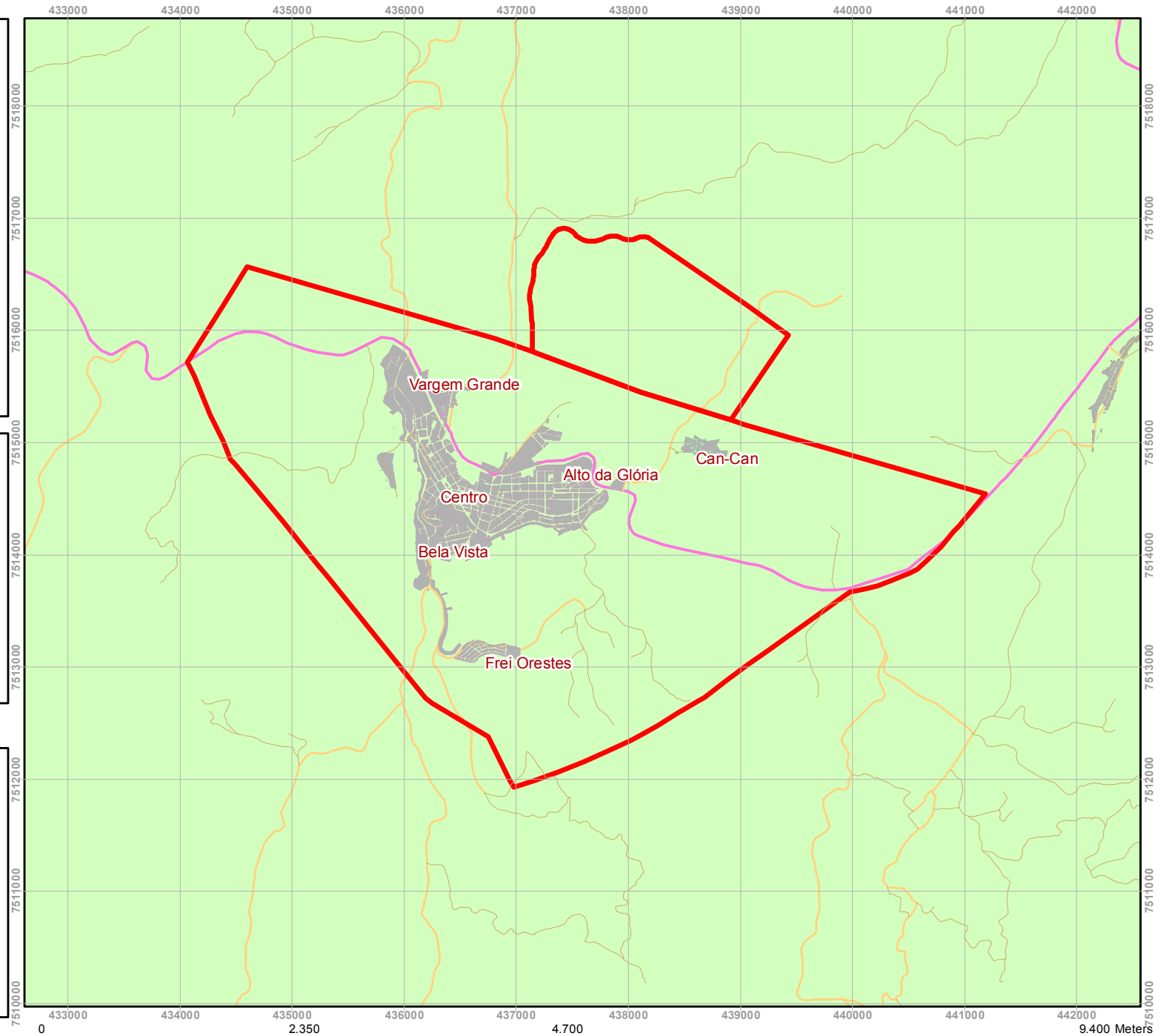
- Shapefile - TecnoGeo

- Imagens orbital do município de Brazópolis - TecnoGeo

Organizado por: Setor de Engenharia
e Obras Municipais



Engenharia e Obras
Municipais



1:50.000